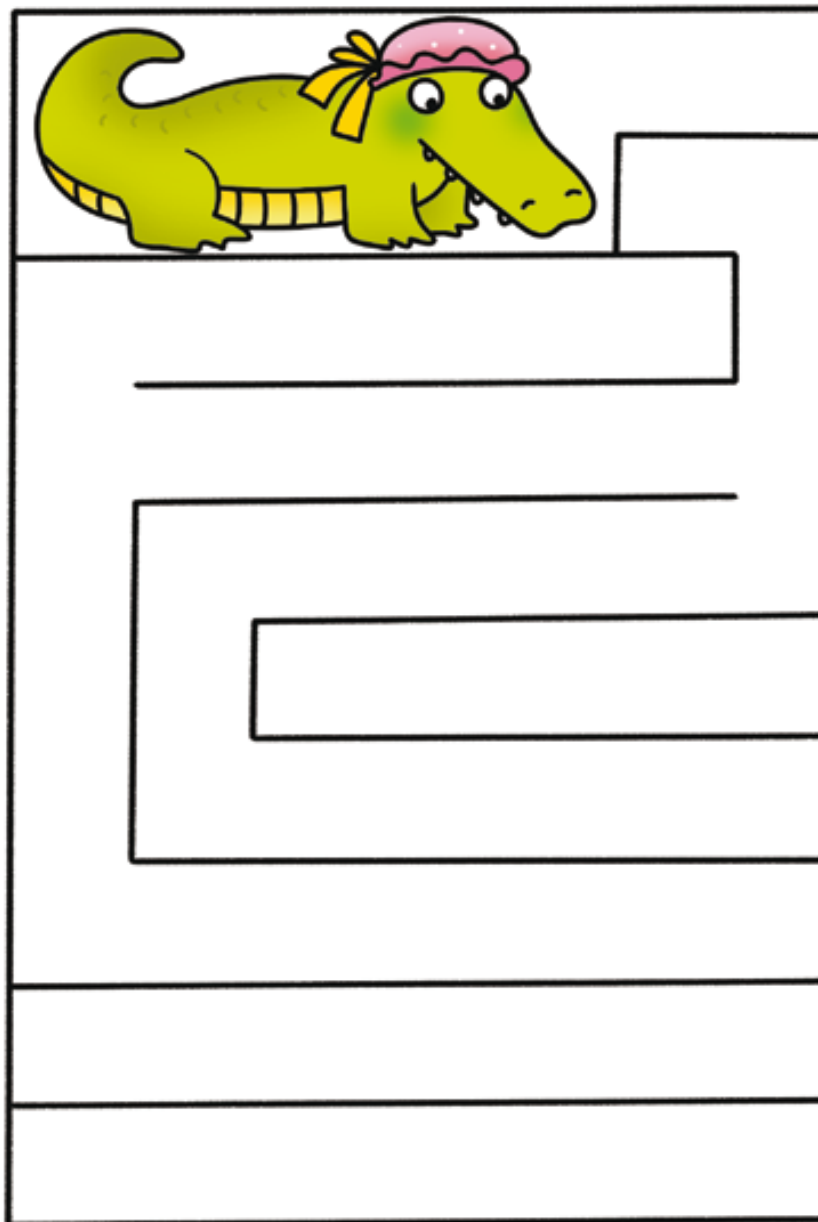




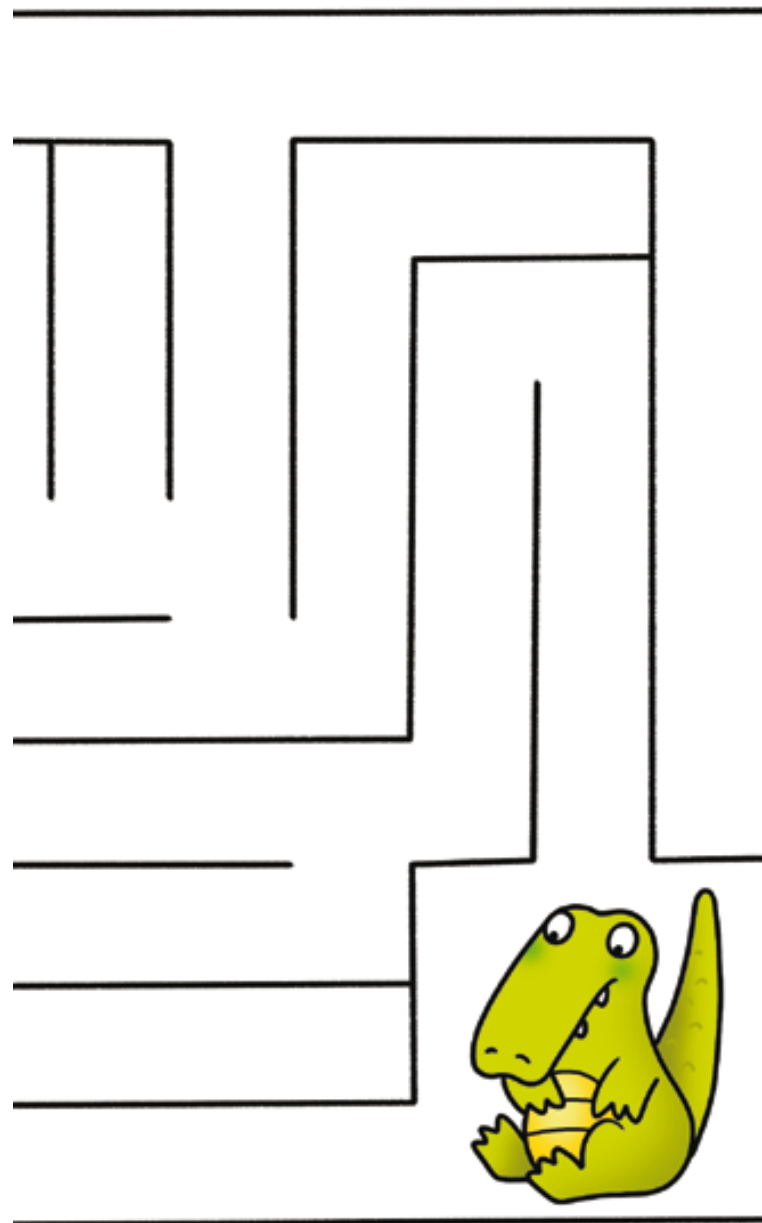
...I ARA JUGUEM!



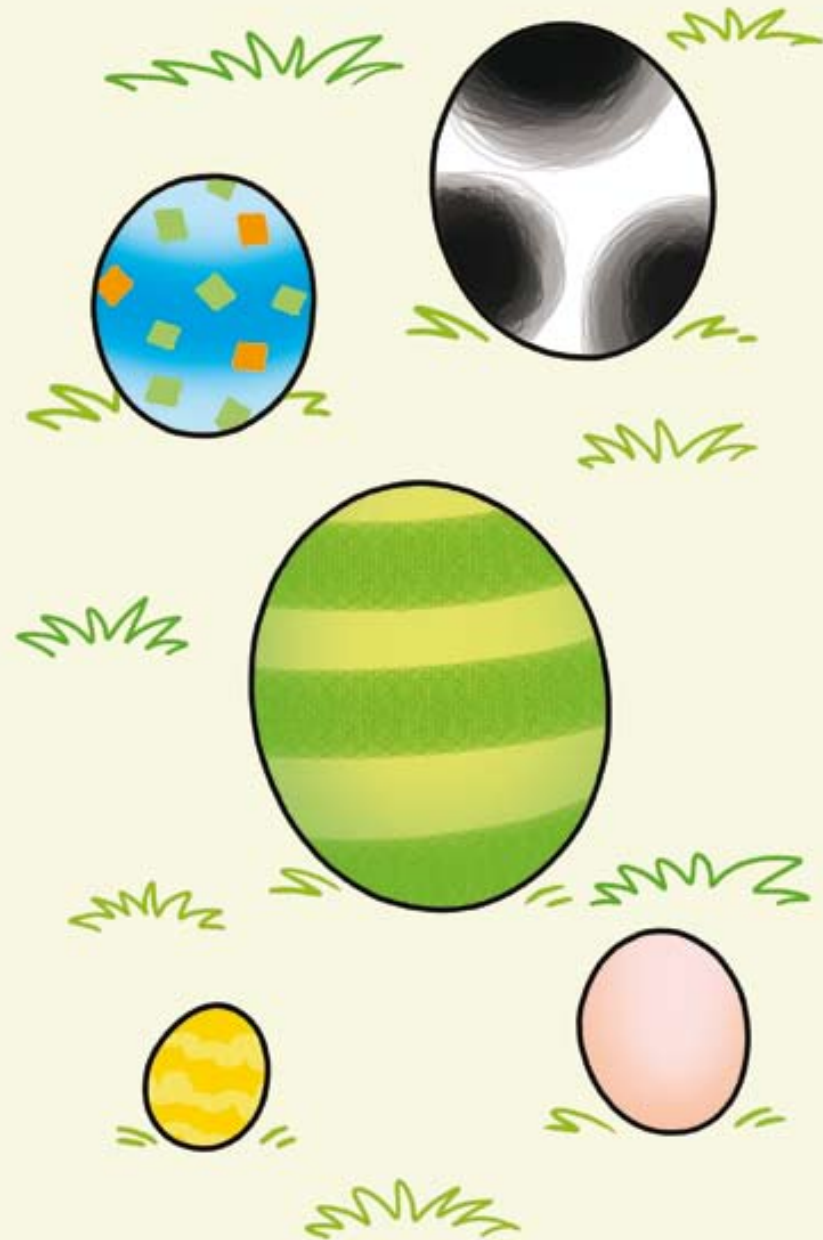
EL PETIT COCODRIL
S'HA PERDUT.



AJUDA LA SEVA MARE,
LA CAMIL·LA, A TROBAR-LO.




UNEIX CADA ANIMAL
AMB EL SEU OU.



ON VA L'HIPOPÒTAM NICOLAU?

SEGUEIX EL FIL
I HO DESCOBRRIRÀS.



A cartoon illustration of a blue elephant with a large trunk, wearing a blue dress and a red and white striped lifebuoy. The elephant is holding a large yellow egg. The background features a tropical scene with green foliage, a tree, and a blue sky. A speech bubble is positioned above the elephant.

TROBA ELS
CINC OUS AMAGATS
EN AQUEST DIBUIX!

